



U. of  
Oslo



U. of  
Copenhagen



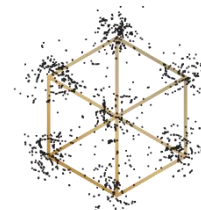
香港中文大學



NTNU



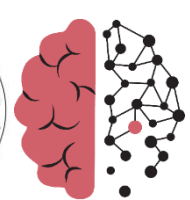
K.G. Jebsen Centre for  
Alzheimer's Disease



Kavli Institute for  
Systems Neuroscience



NO-Age



NO-AD



MIT-AD

# The NO-Age and NO-AD Seminar Series # 42

## 'NAD<sup>+</sup> and Parkinson's disease (tentative)'

by

Prof. Michela Deleidi,

*At*

The German Center for Neurodegenerative Disease (Tübingen), Germany

14:00-15:15 (CET), Monday, 11<sup>th</sup> April 2022

Registration ahead

[https://uio.zoom.us/webinar/register/WN\\_-7xxgQ38RsazUL-5dg02Zg](https://uio.zoom.us/webinar/register/WN_-7xxgQ38RsazUL-5dg02Zg)

Organizers:

Evandro F. Fang (UiO), Jon Storm-Mathisen (UiO), Lene Juel Rasmussen (KU), W.Y. Chan (CUHK)

Queries: [e.f.fang@medisin.uio.no](mailto:e.f.fang@medisin.uio.no)

Previous recorded talks are available here: <https://noad100.com/videos-previous-events/>



**Speaker:** Prof. Michela Deleidi

**Title:** NAD+ and Parkinson's disease (tentative)

**Abstract:**

To be updated

**Biography:**

Michela Deleidi obtained her MD and clinical training in Neurology at Vita-Salute San Raffaele Scientific Institute in Milan. Afterwards, she worked at Harvard Medical School where she focused on the molecular mechanisms of neurodegeneration in Parkinson's disease (PD) and the use of induced pluripotent stem cells (iPSCs) for disease modeling and regenerative medicine applications. She is an Helmholtz Investigator Group Leader at the DZNE Tübingen and Assistant Professor of Neurology at the University of Tübingen. Her research aims at tackling the cell type-specific effect of genetic variants involved in both sporadic and genetic PD, with a focus on the role of innate immunity as an early trigger of PD.

**Name:** Prof. Michela Deleidi

**Institute:** the German Center for Neurodegenerative Disease (Tübingen), Germany

**Email:** [Michela.Deleidi@dzne.de](mailto:Michela.Deleidi@dzne.de)

**Web:**

<https://www.deleidilab.org/>